





330 Main is a 28,302 square foot single-storey retail building constructed in 2020. Above Winnipeg Square underground retail concourse and access to the extensive skywalk system linking office towers, restaurants, and other downtown amenities.

## SPACE & PROPERTY HIGHLIGHTS

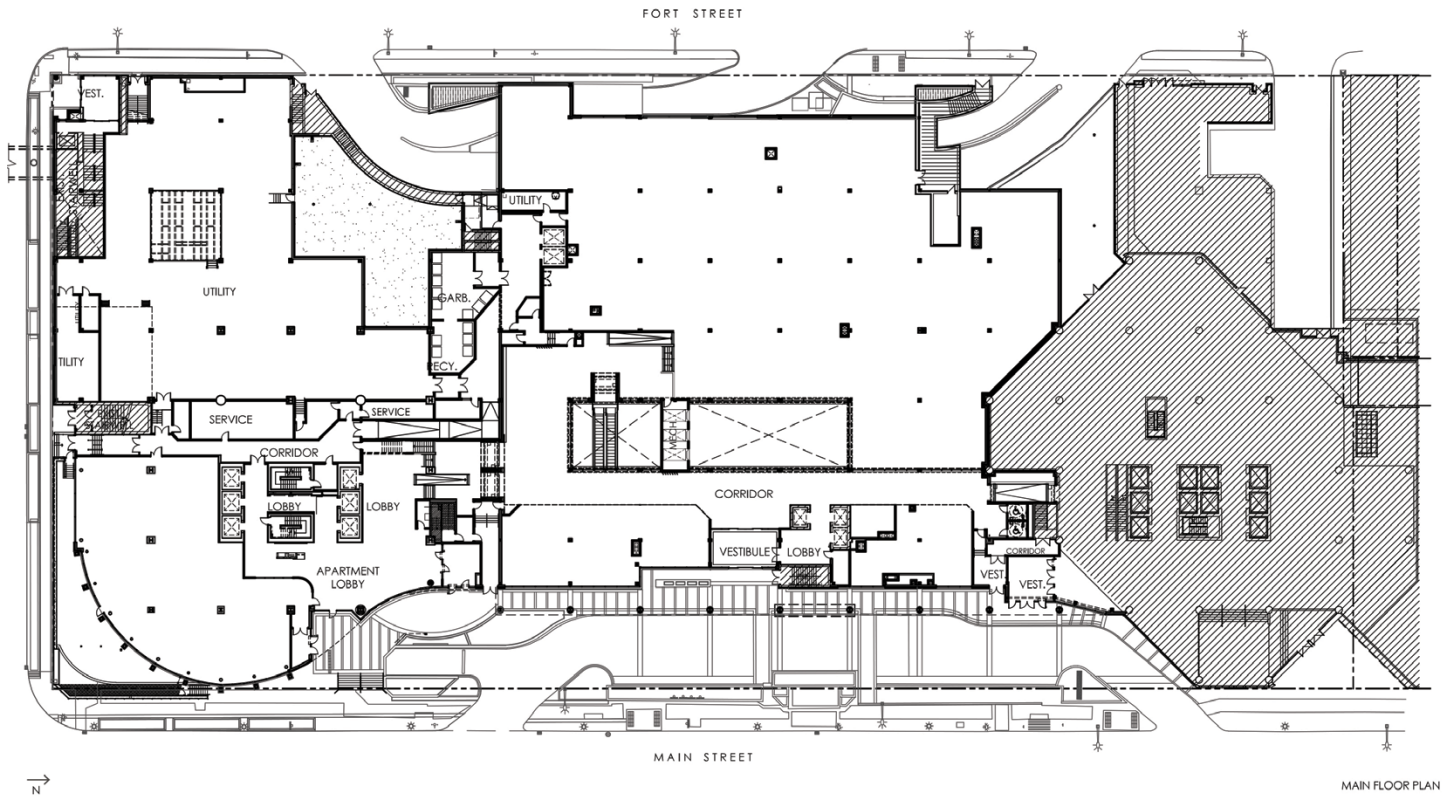
GLA	28,302 SF
Site Area	3.5 acres
Floors	1
Parking	1.49 stalls per 1,000 square feet
Zoning	C4: Commercial
Year Constructed	2020



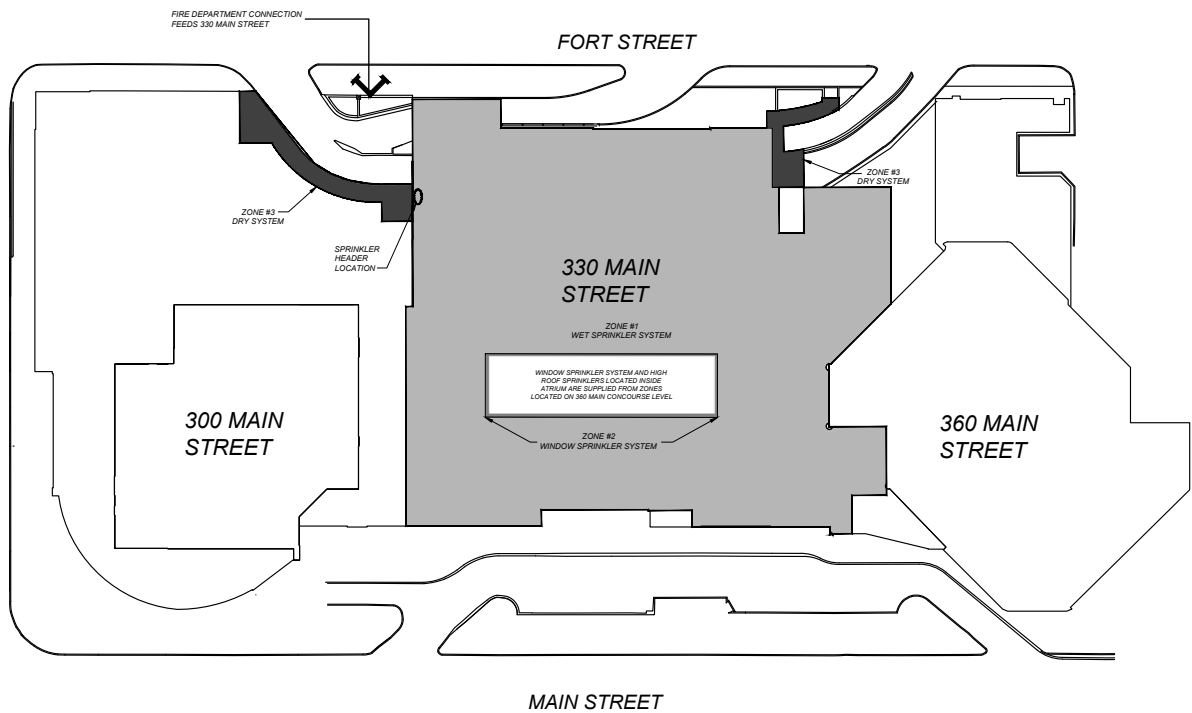
# AVAILABLE SUITES

Unit #	Size	Availability
140	1,089 SF	<b>UNCONDITIONALLY LEASED</b>
160	537 SF	2026-07-01

# FLOOR PLAN



# SITE MAP



**SITE PLAN**  
NOT TO SCALE

330 MAIN



## FIND US HERE

- 28,302 SF of Retail Gross Leasable Area
- Key Tenant(s): Good Life Fitness
- Major Arterials & Access: Portage Avenue and Main Street

# 330 MAIN

## FOR OFFICE LEASING INQUIRIES

### CHRIS VODREY

Vice-President - Leasing - Central Region  
(+1) 204-934-2798  
chris.vodrey@rfa.ca

# RFA

ASSET MANAGEMENT

[RFAFINANCIAL.CA/REAL-ESTATE](https://rfafinancial.ca/real-estate)

2026 RFA. ALL RIGHTS RESERVED. THE INFORMATION CONTAINED IN THIS COMMUNICATION IS STRICTLY CONFIDENTIAL. THIS INFORMATION HAS BEEN OBTAINED FROM SOURCES BELIEVED TO BE RELIABLE BUT HAS NOT BEEN VERIFIED. NO WARRANTY OR REPRESENTATION, EXPRESS OR IMPLIED, IS MADE AS TO THE CONDITION OF THE PROPERTY (OR PROPERTIES) REFERENCED HEREIN OR AS TO THE ACCURACY OR COMPLETENESS OF THE INFORMATION CONTAINED HEREIN, AND SAME IS SUBMITTED SUBJECT TO ERRORS, OMISSIONS, CHANGE OF PRICE, RENTAL OR OTHER CONDITIONS, WITHDRAWAL WITHOUT NOTICE, AND TO ANY SPECIAL LISTING CONDITIONS IMPOSED BY THE PROPERTY OWNER(S). ANY PROJECTIONS, OPINIONS OR ESTIMATES ARE SUBJECT TO UNCERTAINTY AND DO NOT SIGNIFY CURRENT OR FUTURE PROPERTY PERFORMANCE.