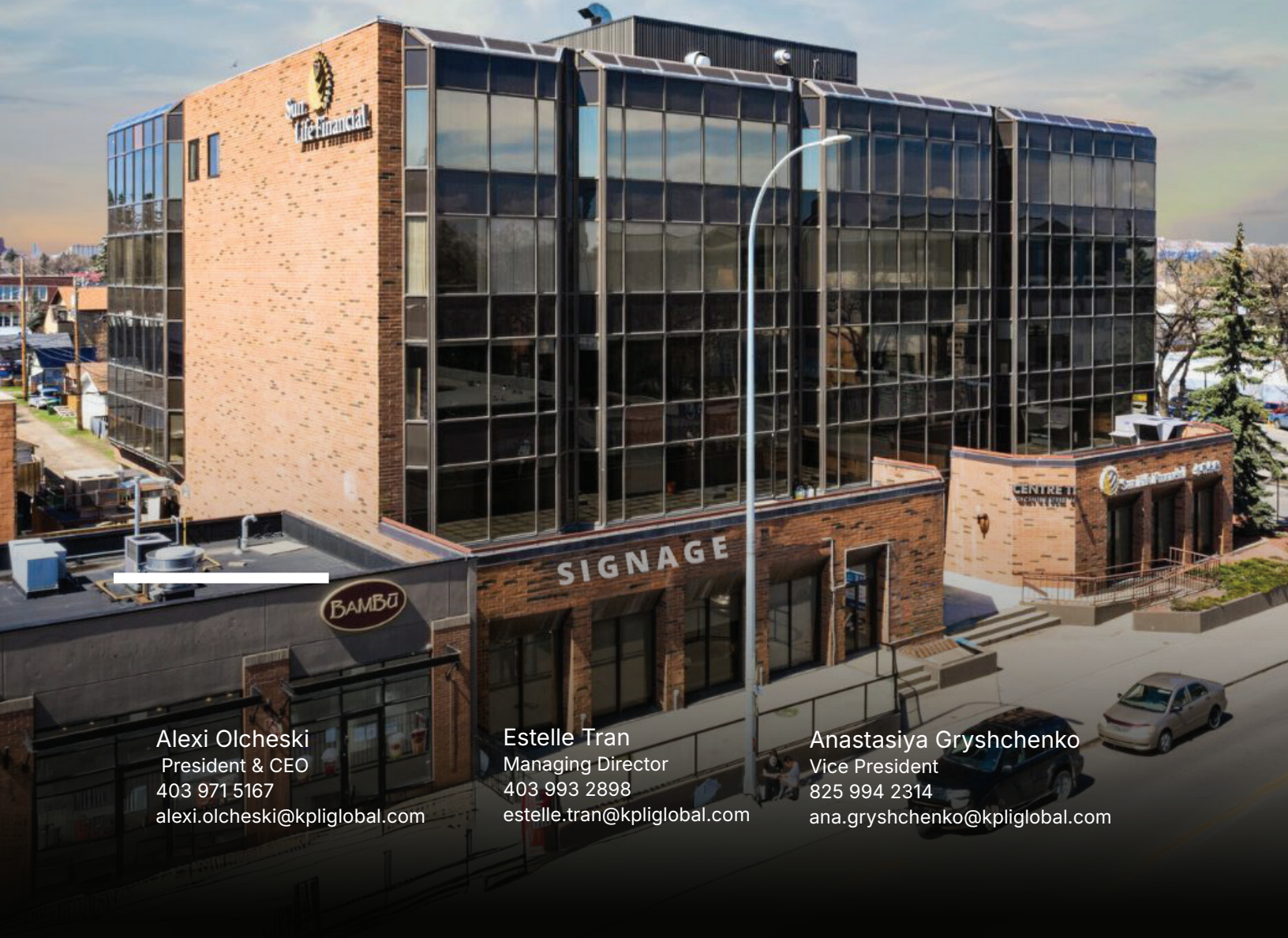




FOR LEASE

CENTRE 11

1121 CENTRE STREET NW



Alexi Olcheski
President & CEO
403 971 5167
alexi.olcheski@kpliglobal.com

Estelle Tran
Managing Director
403 993 2898
estelle.tran@kpliglobal.com

Anastasiya Gryshchenko
Vice President
825 994 2314
ana.gryshchenko@kpliglobal.com

CENTRE 11

1121 Centre Street NW

Availability

Show Suites

Suite 110 3,390 sf

Suite 200 2,500 sf

Suite 440 1,809 sf

Full Floor





Second floor 11,930 sf

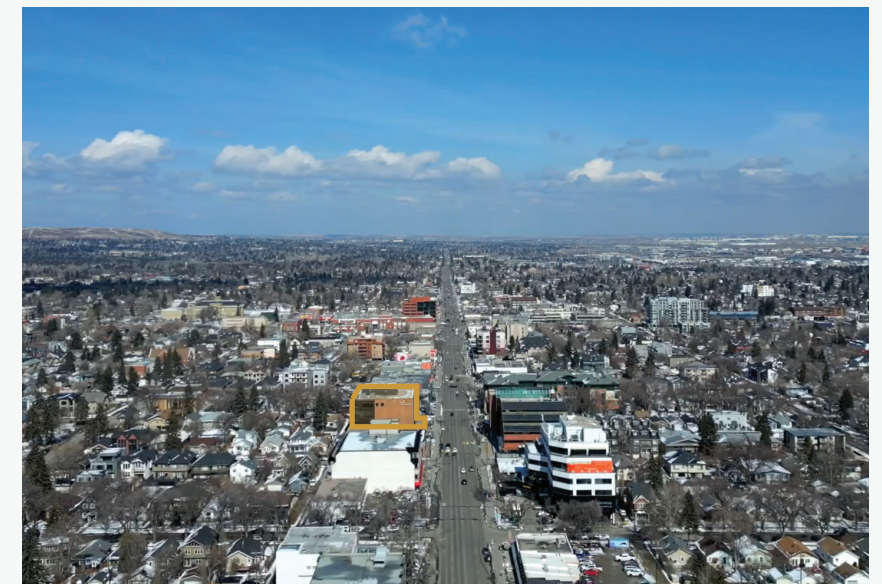
Operating Costs Op. Costs - \$13.73
Taxes - \$2.42
Total - \$16.15

Parking Ratio 1 : 649 sf







Property Highlights

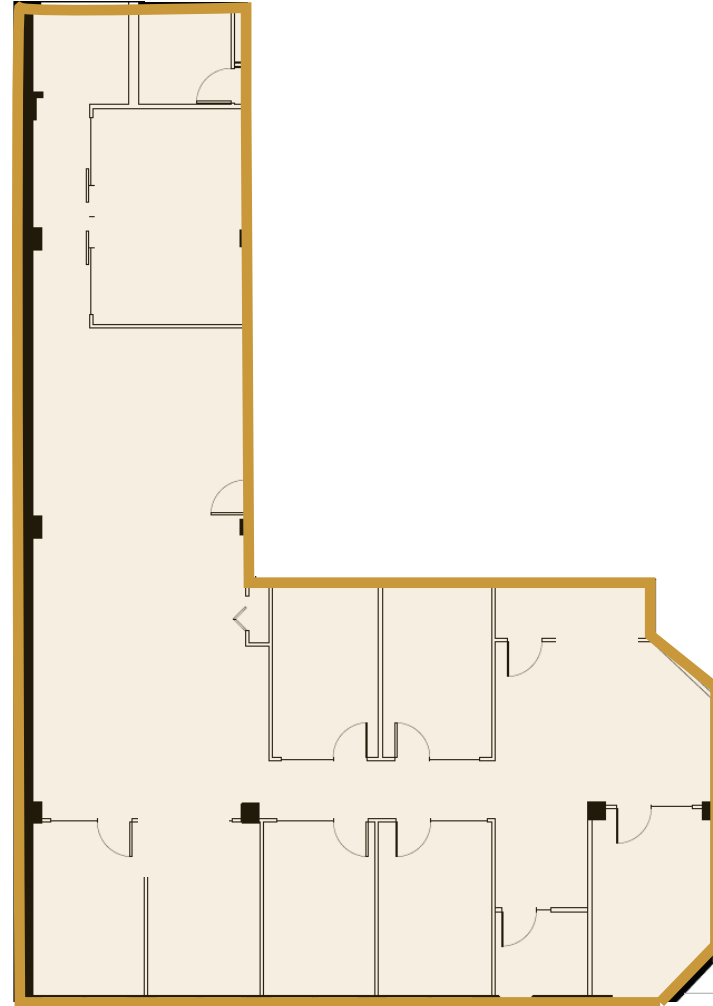
-  Located at the corner of 11 Avenue NW and Centre Street
-  Serviced by several bus routes
-  Ample amenities in the surrounding area
-  High-exposure signage opportunities



Main Floor


Suite 110 - 3,390 SF

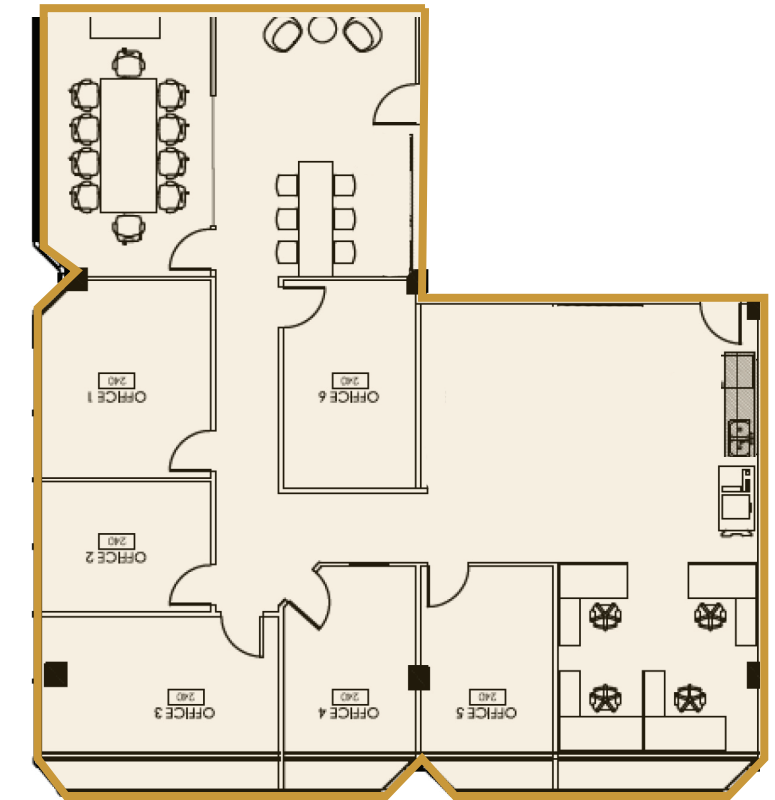
-  7 Offices
-  1 Boardroom room
-  Open Area
-  5 Underground parking stalls



Second Floor

Suite 200 - 2,500 SF


-  7 Offices
-  1 Boardroom room
-  Open Area
-  Kitchen/Lunch area
-  Copy room
-  3 Underground parking stalls





Fourth Floor

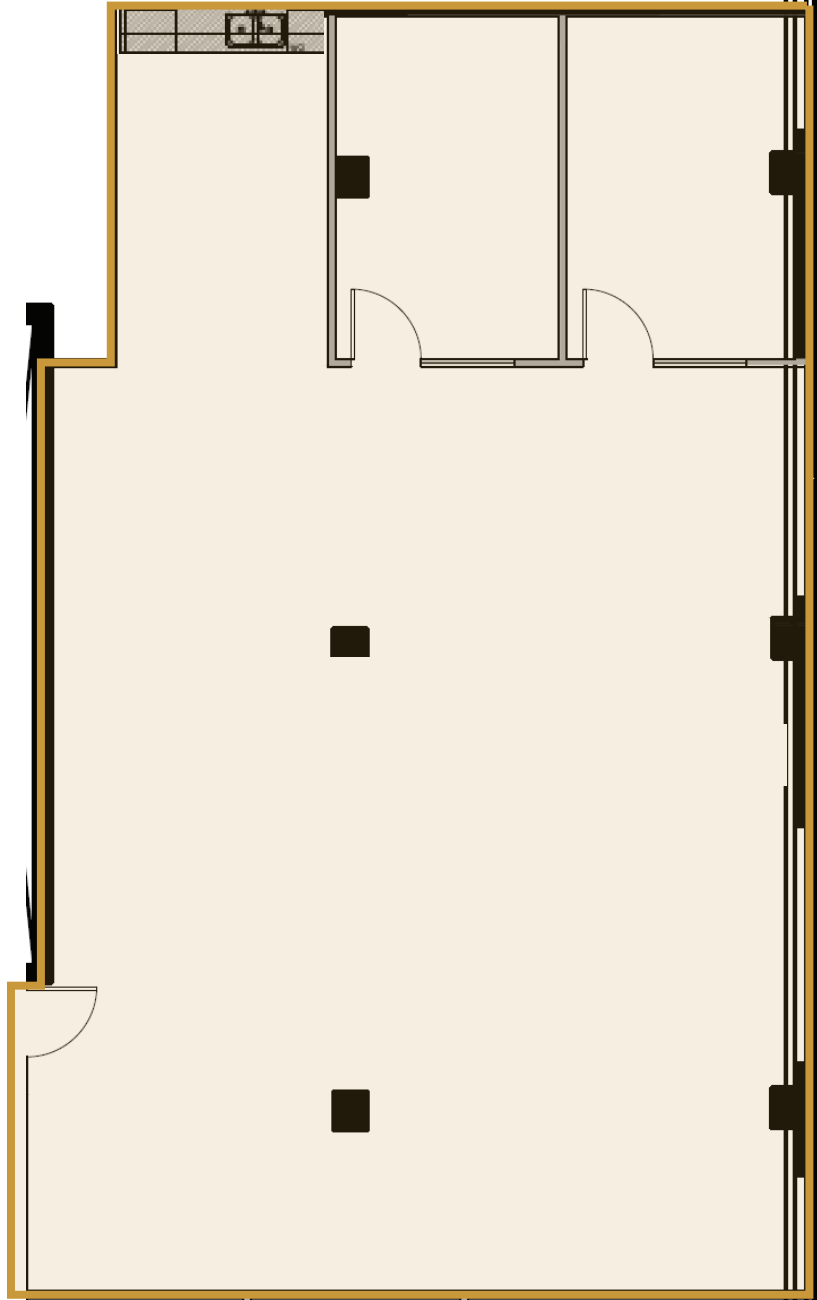
Suite 440 - 1,809 SF

 2 Offices

 Kitchen

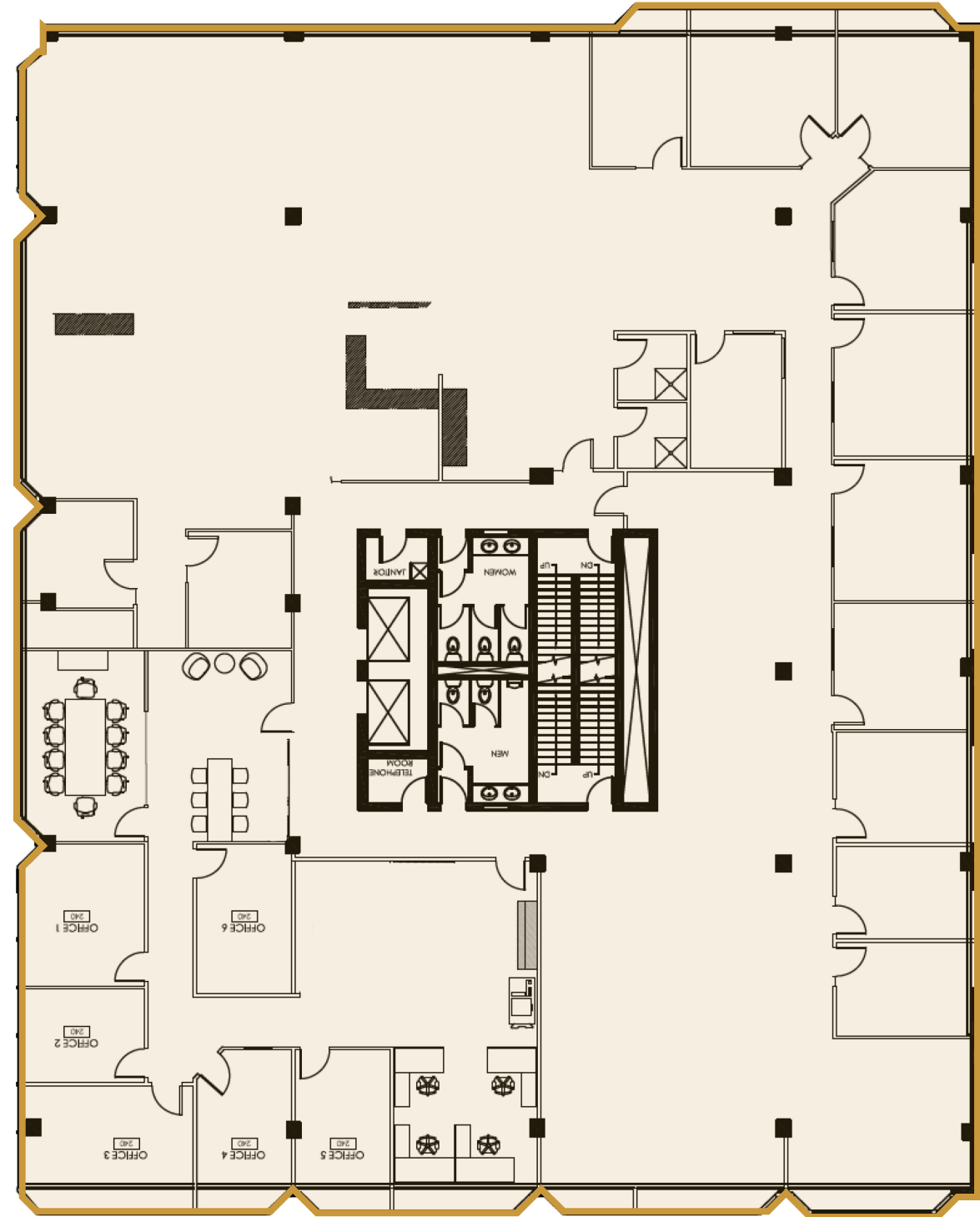
 Open Area

 2 Underground parking stalls



Second Floor

11,930 SF



CENTRE 11

1121 CENTRE SREET NW

Alexi Olcheski

President & CEO

403 971 5167

alexi.olcheski@kpliglobal.com

Estelle Tran

Managing Director

403 993 2898

estelle.tran@kpliglobal.com

Anastasiya Gryshchenko

Vice President

825 994 2314

ana.gryshchenko@kpliglobal.com

KPLI Global.



KPLI
GLOBAL