



GREENWAY CENTER

1600 Aspen Commons Middleton, WI

PROPERTY

The Greenway Building, a nine-story structure constructed in 2001, features 238,739 square feet of Class-A office space and is connected to the Wisconsin Trade Center via a sky-walk.

LOCATION

Located just blocks from the West Beltline Highway 12/14, this site provides convenient access to the western and southern suburbs. Situated in the West Madison/Middleton business community, it lies at the heart of the Greenway Station retail center. With unmatched accessibility, visibility, and proximity to walkable restaurants, a farmers' market, and walking/bike paths, it offers a vibrant and dynamic environment.

AMENITIES

This property has access to conference centers, board rooms, a full-service cafeteria, a fitness center, heated underground parking, a secured parking ramp, a loading dock, backup generators, and first-class property management with on-site maintenance.



Artis REIT Madison Office
8215 Greenway Blvd, Suite 220
Middleton, WI 53562
P.O. Box 7700
Madison, WI 53707
madison.artisreit.com

Kyle Robb, CCIM
Leasing Manager

608.830.6308
krobb@artisreit.com

Leon R. Wilkosz, CCIM, RPA®
Senior Vice-President
Asset Management - Madison
608.830.6302
lwilkosz@artisreit.com



BUILDING OVERVIEW

1600 Aspen Commons Middleton, WI

BUILDING DESCRIPTION

The Greenway Building features 238,739 square feet of Class-A office space in the West Madison/Middleton business community. Located just blocks from the West Beltline Highway 12/14 and the Greenway Station retail center, this nine-story site built in 2001 offers unmatched access and visibility.

BUILDING HOURS

7:00 a.m. - 5:30 p.m. M - F

SIGNAGE

Building & monument signage available

STORIES

9

PARKING

4.26/1000
1,017 Stalls/946 in secured & covered parking ramp

HVAC SYSTEM

Heat pump

TELEPHONE/CABLE/INTERNET PROVIDERS

TDS Metrocom/Charter Communications/SupraNet/Century Link/WIN Technologies



Artis REIT Madison Office
8215 Greenway Blvd, Suite 220
Middleton, WI 53562
P.O. Box 7700
Madison, WI 53707
madison.artisreit.com

Kyle Robb, CCIM
Leasing Manager

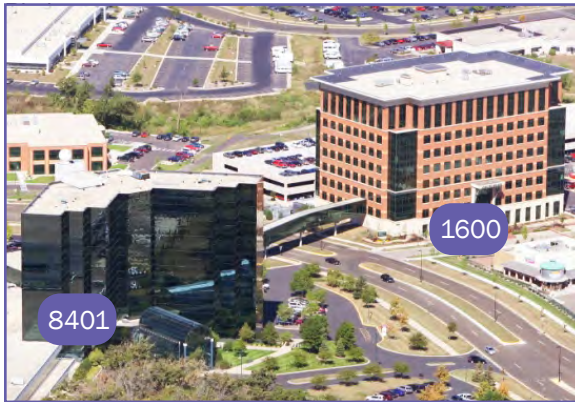
608.830.6308
krobb@artisreit.com

Leon R. Wilkosz, CCIM, RPA®
Senior Vice-President
Asset Management - Madison
608.830.6302
lwilkosz@artisreit.com

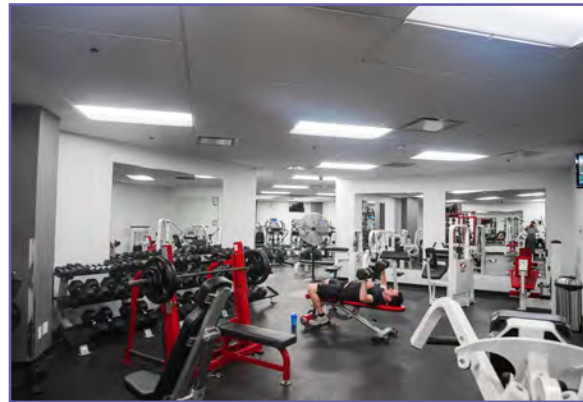
BUILDING AMENITIES

1600 Aspen Commons Middleton, WI

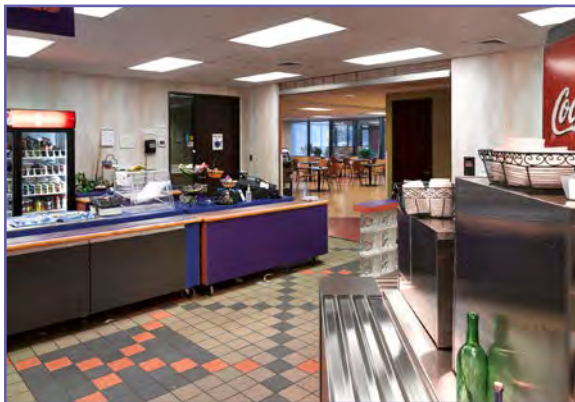
Skywalks to Parking Structure and 8401 Greenway



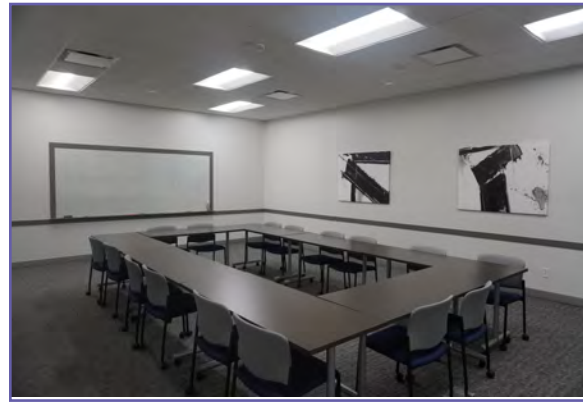
Access to Fitness Center at Wisconsin Trade Center



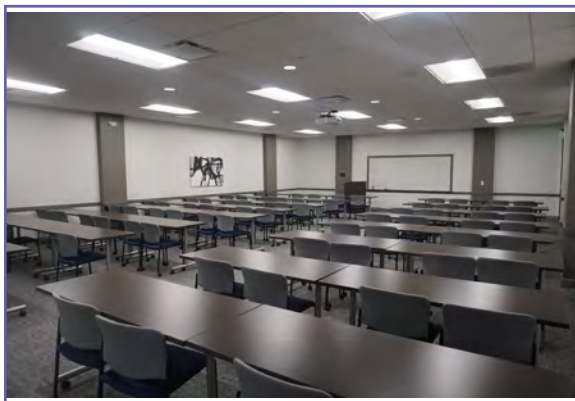
Access to Cafeteria at Wisconsin Trade Center



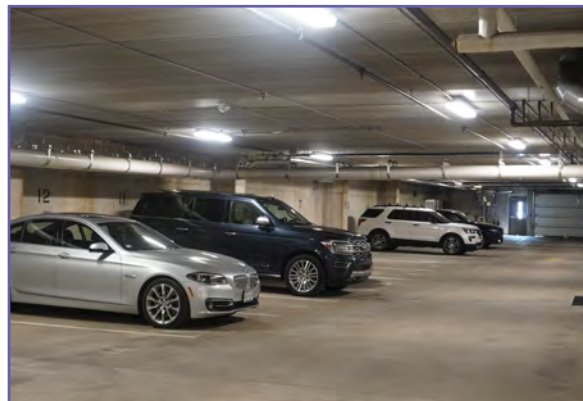
Access to Conference Centers at Wisconsin Trade Center



Access to Class Room at Wisconsin Trade Center

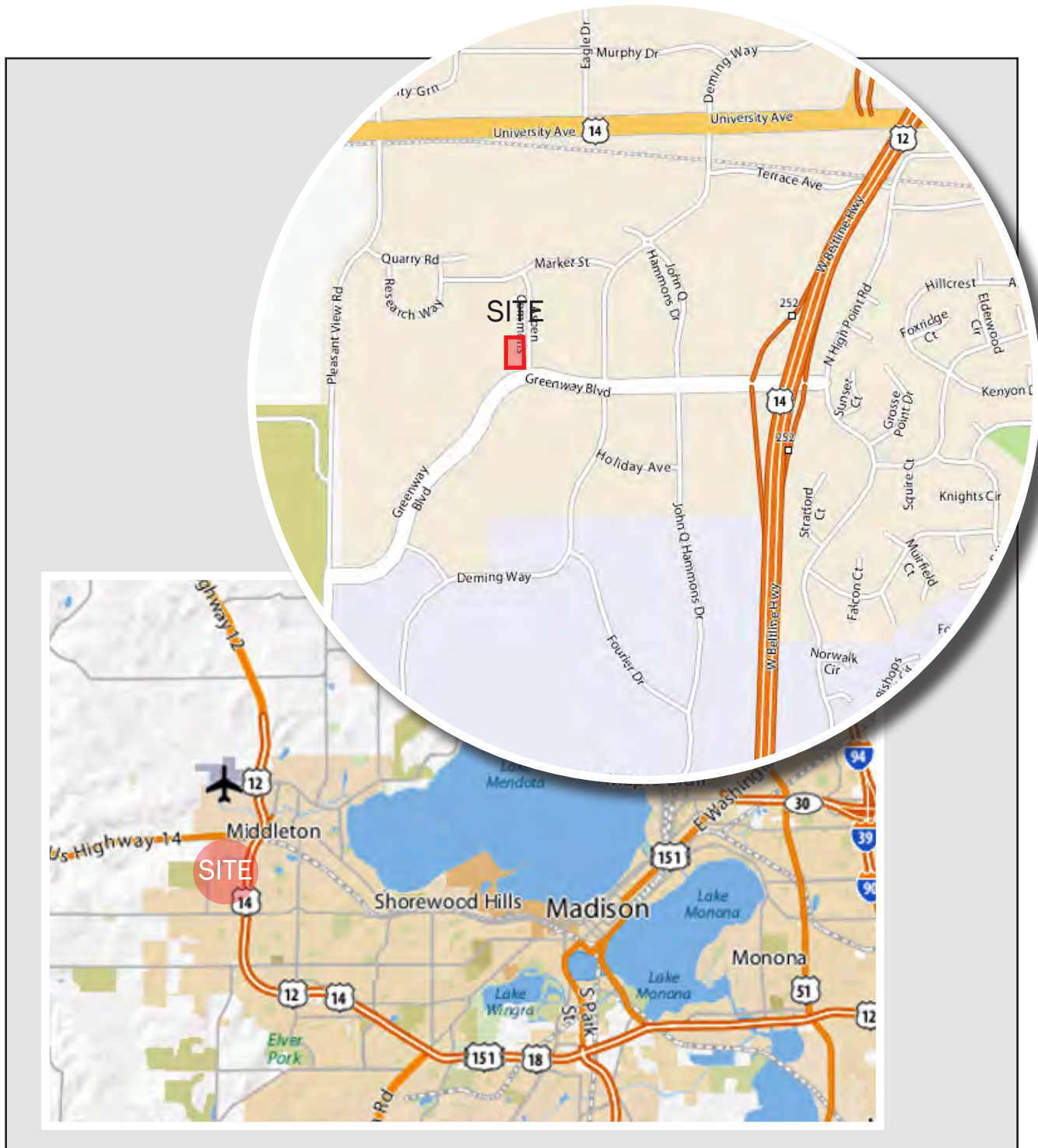


Covered Parking



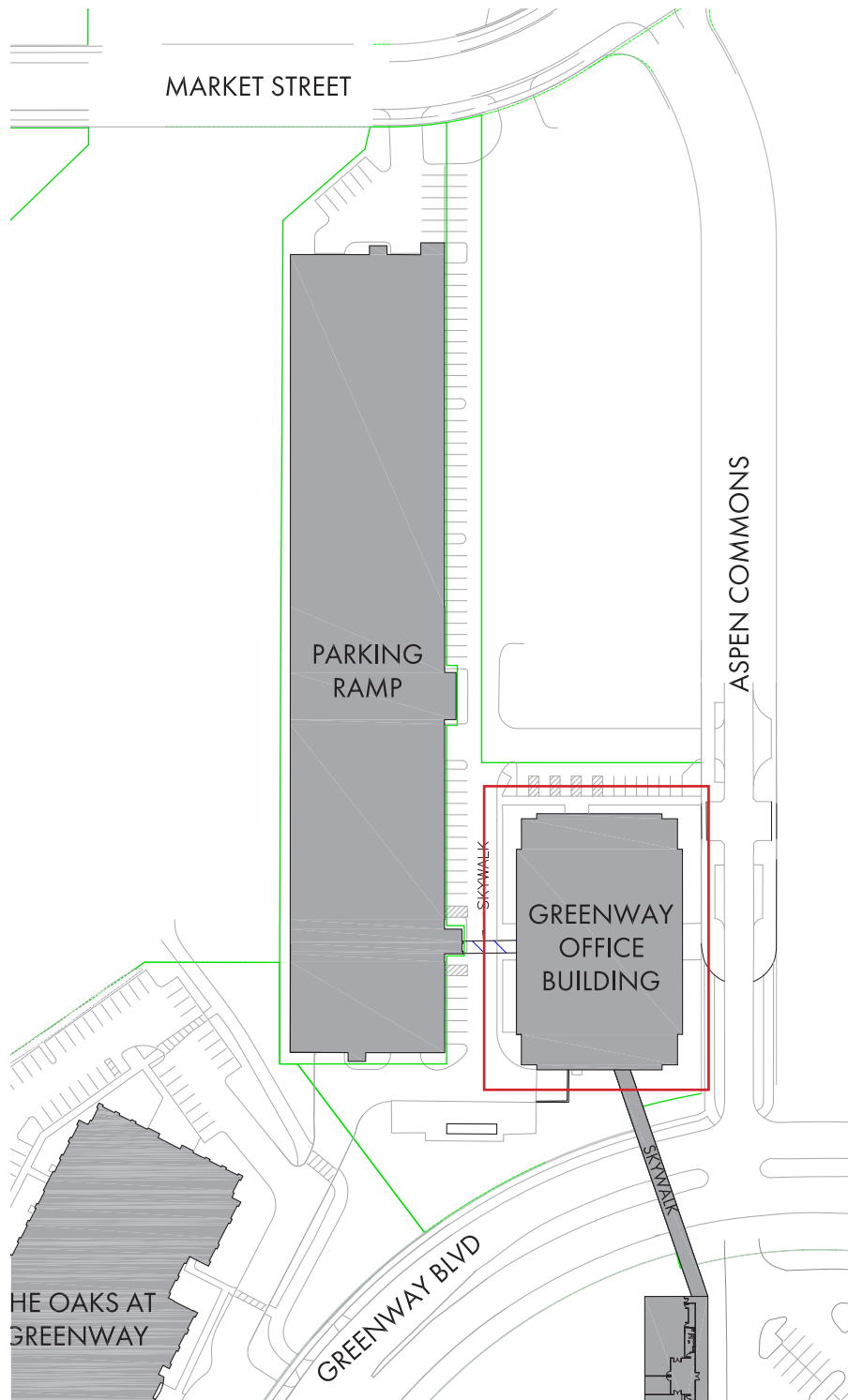
LOCATION MAP

1600 Aspen Commons Middleton, WI



SITE PLAN

1600 Aspen Commons Middleton, WI



AERIAL LOCATION & AMENITIES

1600 Aspen Commons Middleton, WI

