

Industrial | For Lease



# 2061-2065 Logan Ave

Highly desirable location along Winnipeg's busiest North-South corridor

Units 1-3, 2061-2065 Logan Avenue  
Winnipeg, Manitoba  
[www.cbre.ca/winnipeg](http://www.cbre.ca/winnipeg)

# Property Information

Prime Warehouse Space in the Northwest



## ASKING NET RENT

\$10.95 PSF

## ADDITIONAL RENT

\$6.37 PSF (2026 est.) *plus 5% mgmt fee on gross rent*

## AVAILABLE SIZE

UNIT 1-3

7,535 SF

## CEILING HEIGHT

20' CLEAR

## LOADING

3 DOCK LEVEL DOORS (8'x8')

## ZONING

M1

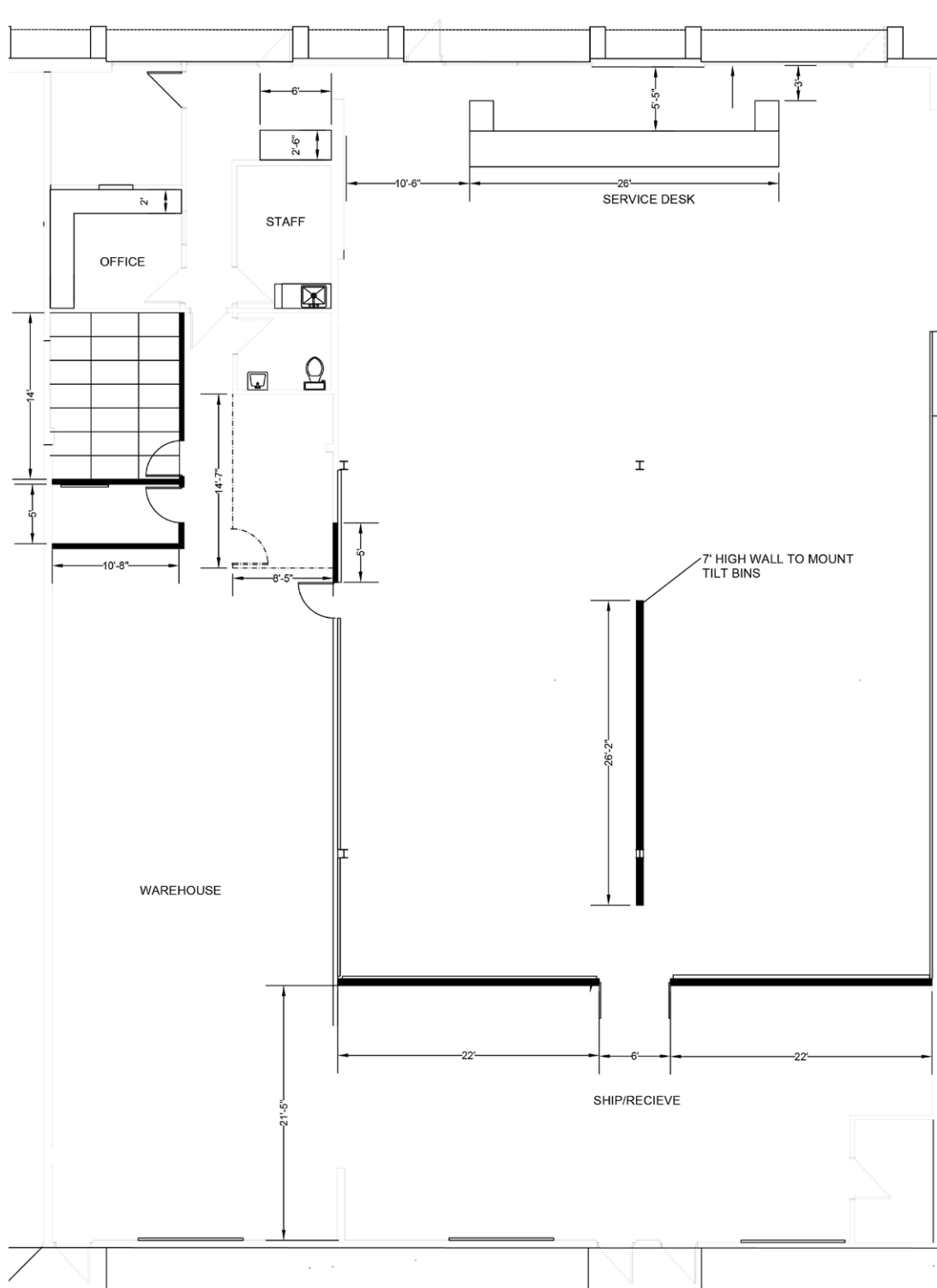
## AVAILABLE

IMMEDIATELY



# Floor Plan


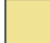

Units 1-3 7,535 sq. ft. Available

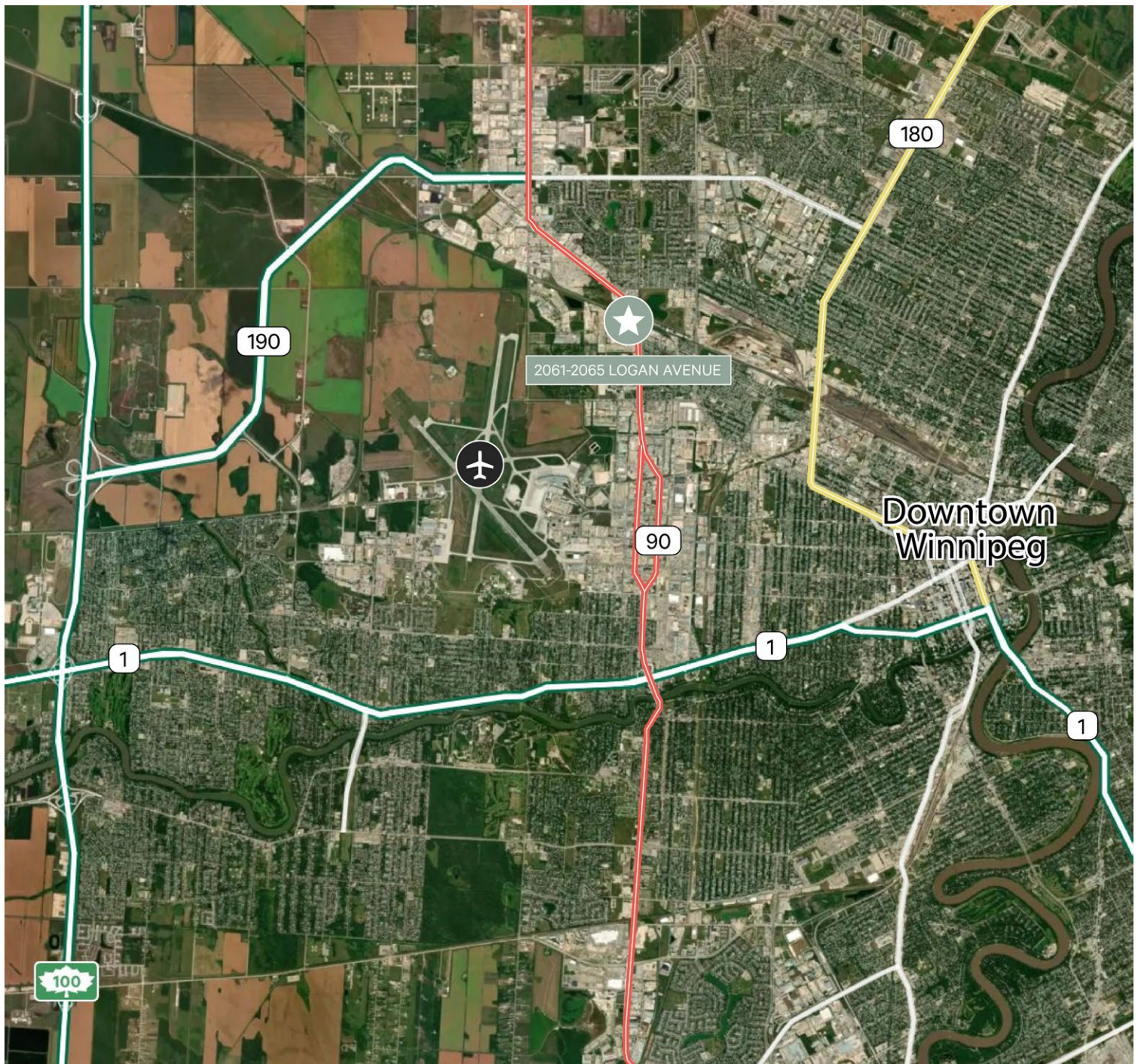


# Convenient Location

2061-2065 Logan Avenue is conveniently located just off Route 90, Winnipeg's busiest North-South traffic corridor. This creates great access to all other major routes across the city.

Additionally, the property is situated in close proximity to the Winnipeg James Armstrong Richardson International Airport.

-  ROUTE 90
-  ROUTE 180
-  TRANS CANADA HWY



FOR LEASE

# 2061-2065 Logan Avenue

Winnipeg, Manitoba



For more information, please contact:

**Cam Hildebrand**  
Vice President, Associate Broker  
*Personal Real Estate Corporation*  
T +1 204 500 5008  
cam.hildebrand@cbre.com

**Daniel Mondor, CCIM**  
Vice President  
*Personal Real Estate Corporation*  
T +1 204 500 5003  
daniel.mondor@cbre.com

**CBRE**

[www.cbre.ca/winnipeg](http://www.cbre.ca/winnipeg)

CBRE Limited | Real Estate Brokerage | 201 Portage Avenue | Suite 1650 | Winnipeg, MB R3B 3K6 | +1 204 500 5001 | [www.cbre.ca](http://www.cbre.ca)

This disclaimer shall apply to CBRE Limited, and to all divisions of the Corporation ("CBRE"). The information set out herein (the "Information") has not been verified by CBRE, and CBRE does not represent, warrant or guarantee the accuracy, correctness and completeness of the Information. CBRE does not accept or assume any responsibility or liability, direct or consequential, for the Information or the recipient's reliance upon the Information. The recipient of the Information should take such steps as the recipient may deem necessary to verify the Information prior to placing any reliance upon the Information. The Information may change and any property described in the Information may be withdrawn from the market at any time without notice or obligation to the recipient from CBRE.