

FOR LEASE

2061-2065 Logan Avenue

Units 4-5, Winnipeg, Manitoba



4,985 SF Available

This prime industrial property boasts a highly desirable location along Winnipeg's busiest North-South corridor, providing unmatched visibility and logistical advantages.

CBRE

www.cbre.ca/winnipeg

Property Information

Prime Warehouse Space in the Northwest



ASKING NET RENT

\$10.95 PSF

ADDITIONAL RENT

\$5.87 PSF (2025 EST.) *plus 5% mgmt fee on gross rent*

AVAILABLE SIZE

UNIT 4-5

4,985 SF

CEILING HEIGHT

20' CLEAR

LOADING

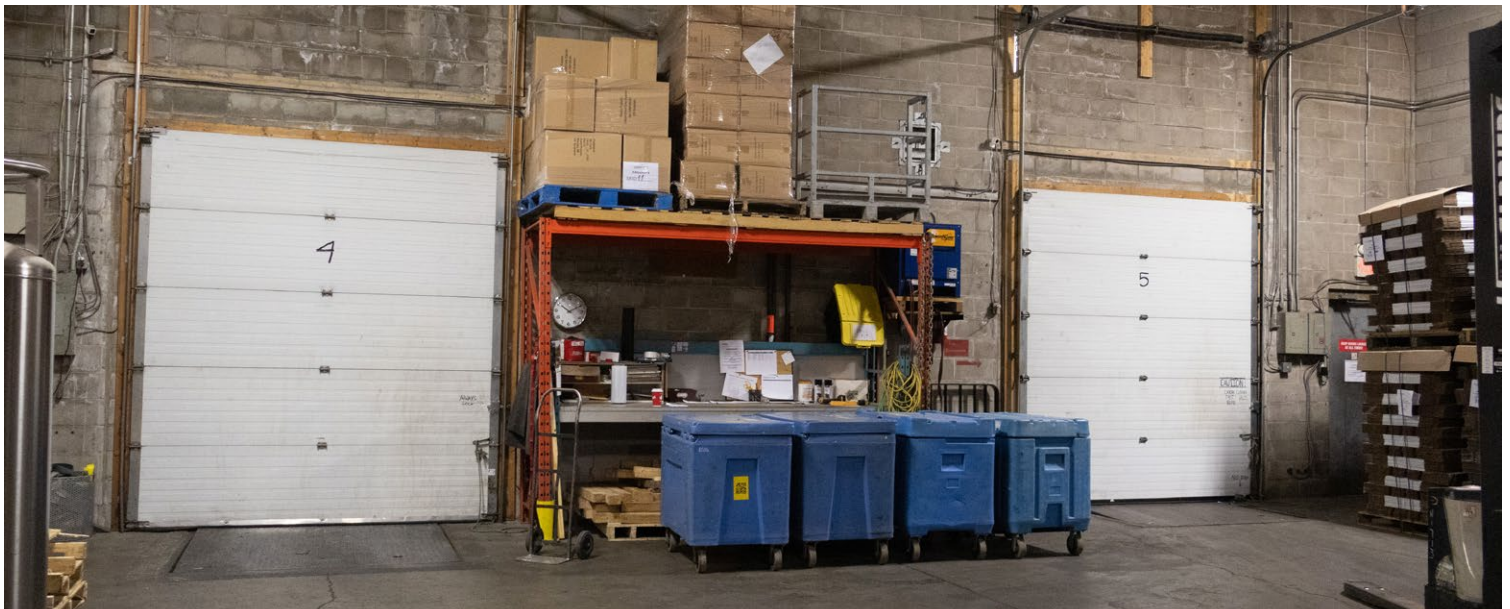
2 DOCK LEVEL DOORS (8'x8')

ZONING

M1

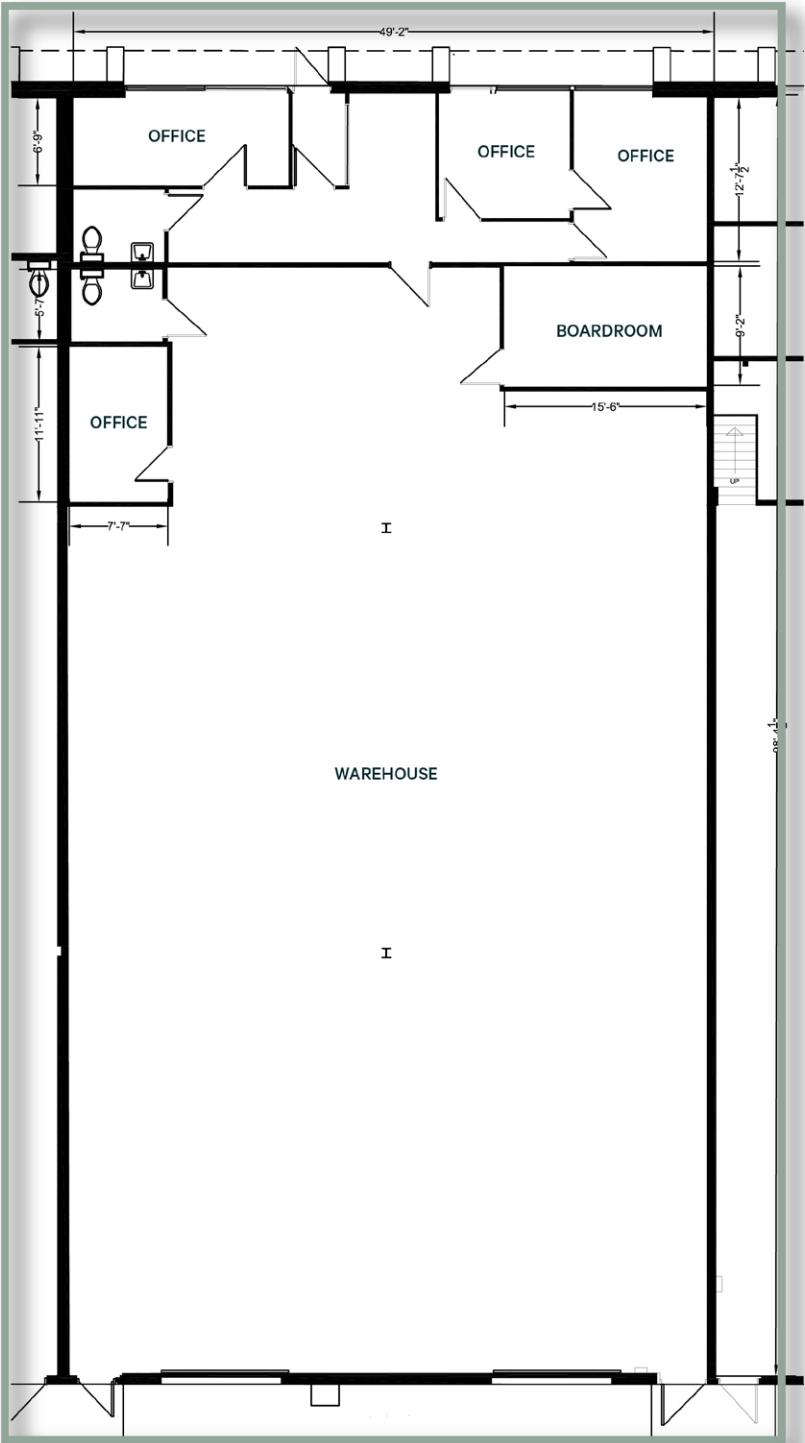
AVAILABLE

FEBRUARY 1, 2026



Floor Plan


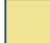

Unit 4-5, 4,985 sq. ft. Available

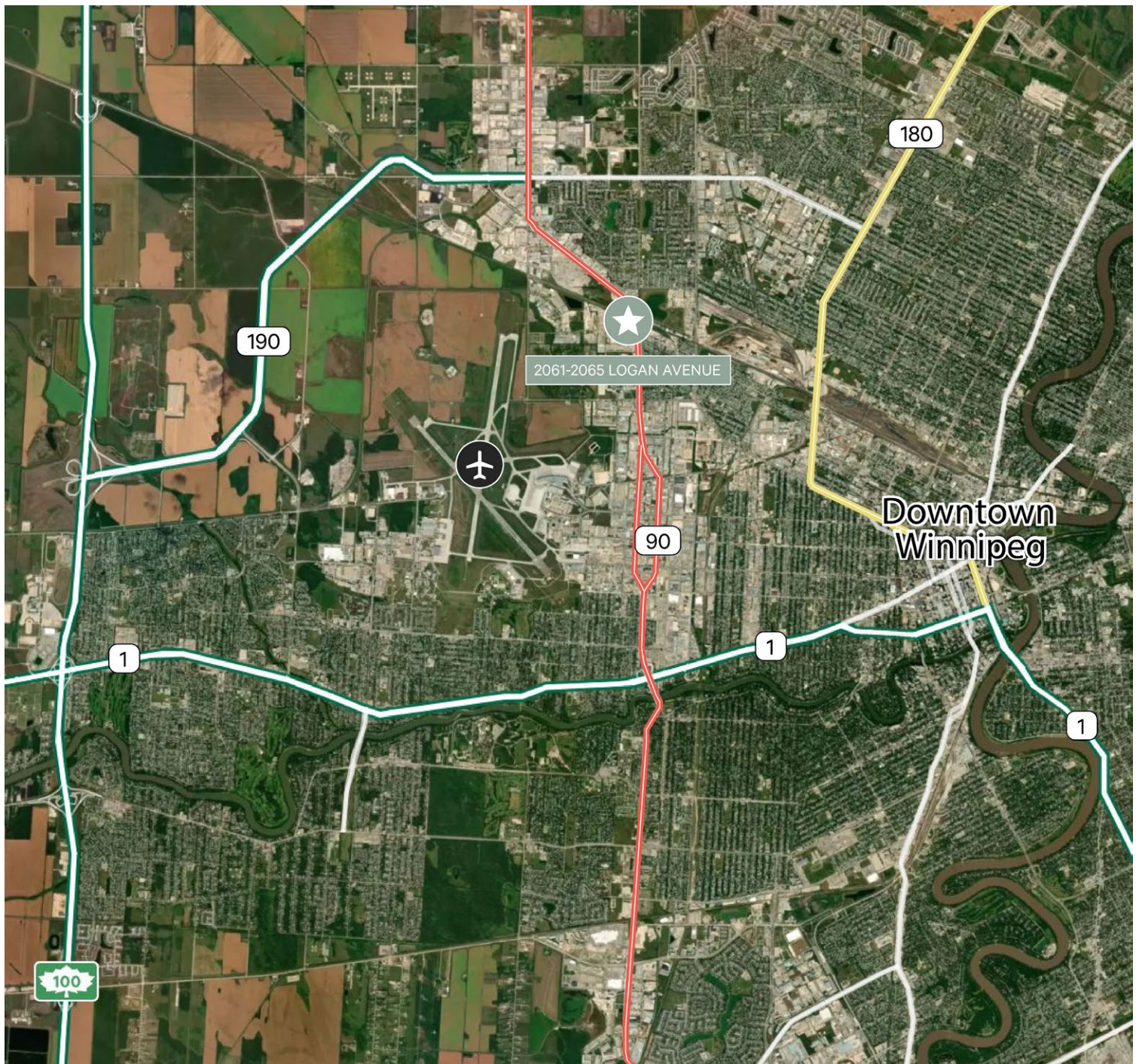


Convenient Location

2061-2065 Logan Avenue is conveniently located just off Route 90, Winnipeg's busiest North-South traffic corridor. This creates great access to all other major routes across the city.

Additionally, the property is situated in close proximity to the Winnipeg James Armstrong Richardson International Airport.

-  ROUTE 90
-  ROUTE 180
-  TRANS CANADA HWY



FOR LEASE

2061-2065 Logan Avenue

Winnipeg, Manitoba



For more information, please contact:

Cam Hildebrand

Associate Broker

Vice President

T +1 204 500 5008

cam.hildebrand@cbre.com

Daniel Mondor

Personal Real Estate Corporation

Vice President

T +1 204 500 5003

daniel.mondor@cbre.com

CBRE

www.cbre.ca/winnipeg

CBRE Limited | Real Estate Brokerage | 201 Portage Avenue | Suite 1650 | Winnipeg, MB R3B 3K6 | +1 204 500 5001 | www.cbre.ca

This disclaimer shall apply to CBRE Limited, and to all divisions of the Corporation ("CBRE"). The information set out herein (the "Information") has not been verified by CBRE, and CBRE does not represent, warrant or guarantee the accuracy, correctness and completeness of the Information. CBRE does not accept or assume any responsibility or liability, direct or consequential, for the Information or the recipient's reliance upon the Information. The recipient of the Information should take such steps as the recipient may deem necessary to verify the Information prior to placing any reliance upon the Information. The Information may change and any property described in the Information may be withdrawn from the market at any time without notice or obligation to the recipient from CBRE.