

FOR LEASE

West Logan Place

2073 Logan Avenue, Winnipeg, Manitoba

CBRE

www.cbre.ca/winnipeg



Property Information

Prime Warehouse Space at West Logan Place



ASKING NET RENT

\$10.95 PSF

ADDITIONAL RENT

\$6.29 PSF (2025 est) *plus 5% mgmt fee on gross rent*

AVAILABLE AREA

UNIT 5-7: 17,317 SF

CEILING HEIGHT

24' CLEAR

LOADING

3 DOCK 1 GRADE

ZONING

M2

AVAILABLE

JAN 1, 2026



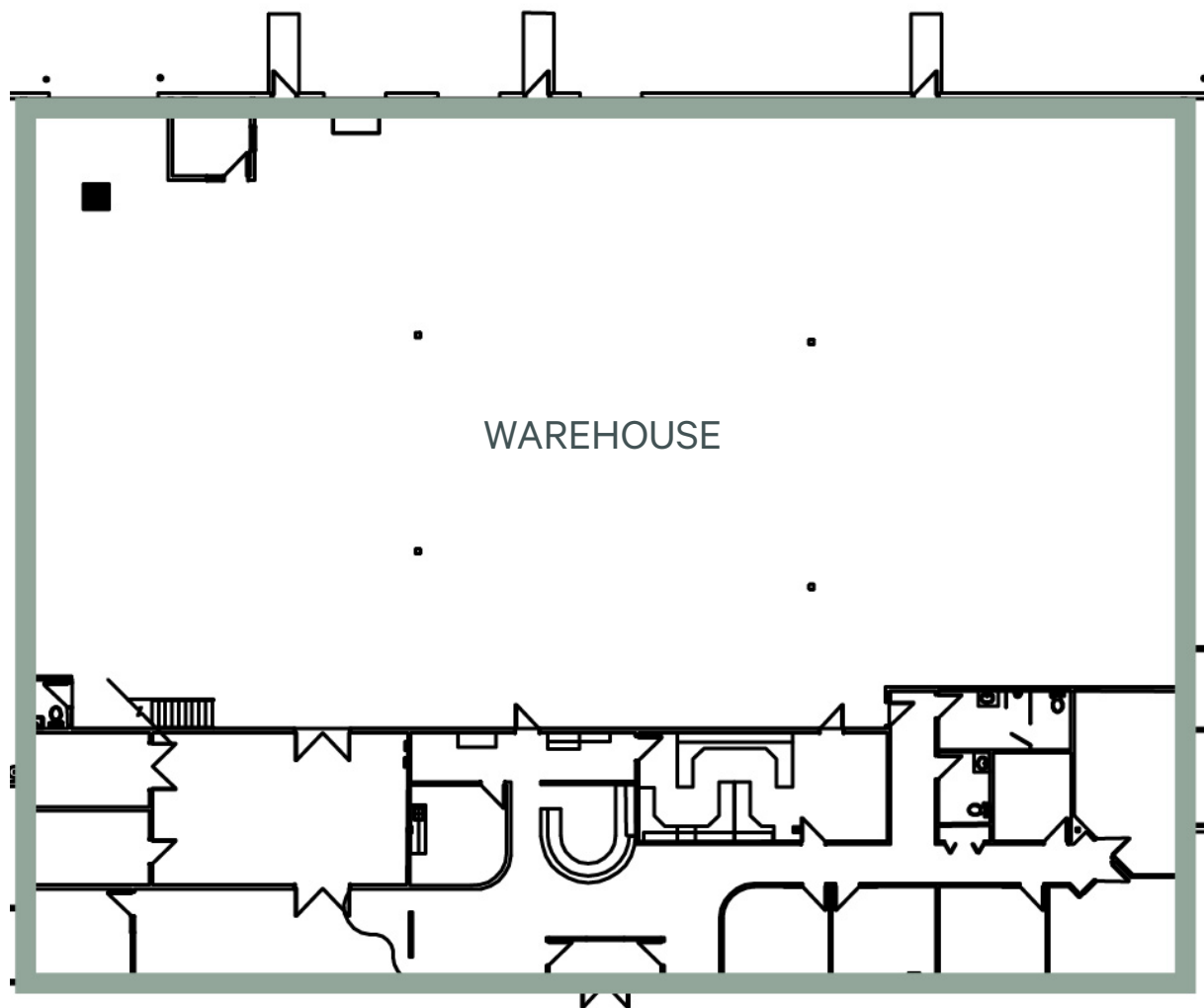
Property Photos

Prime Warehouse Space at West Logan Place



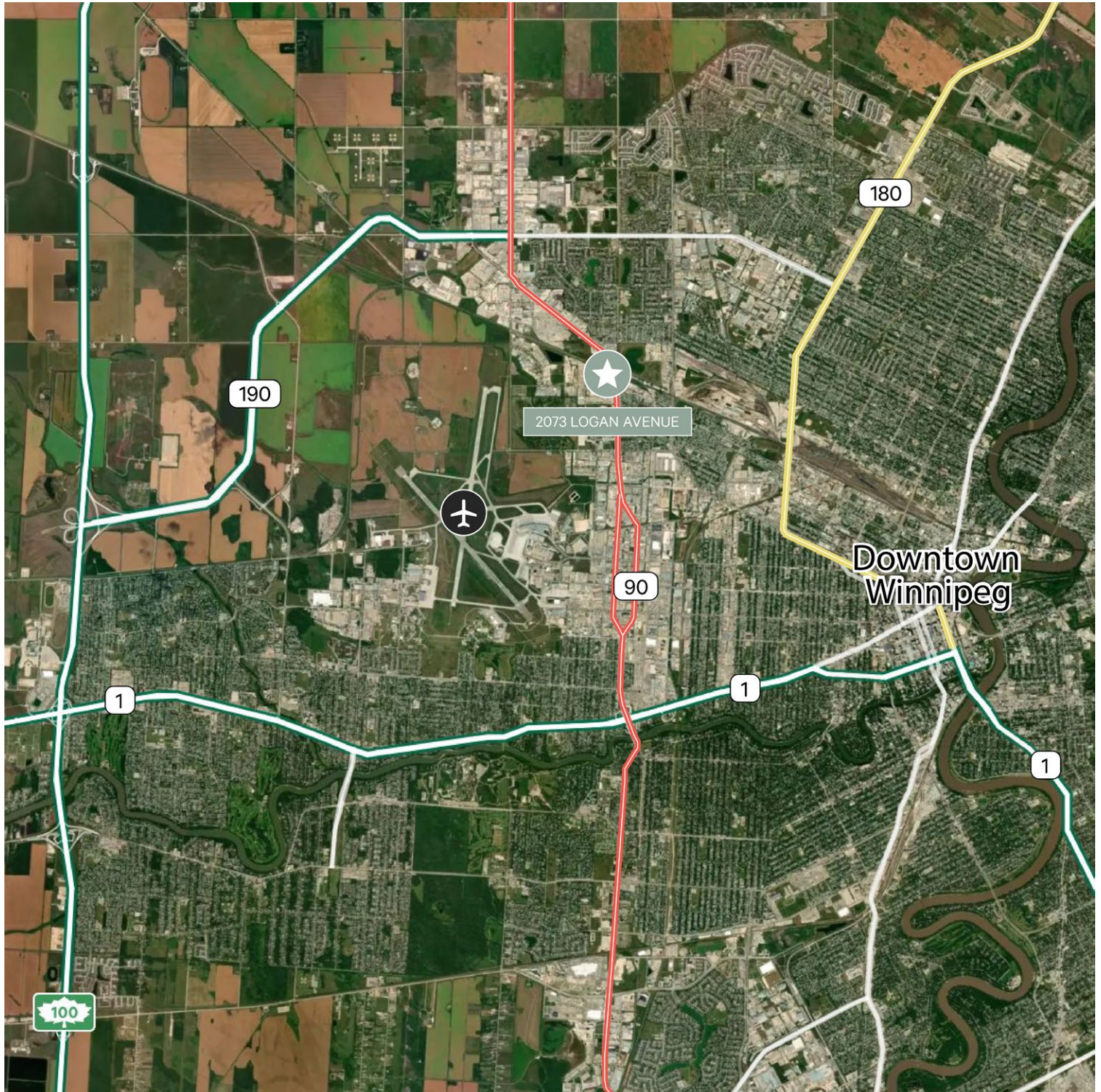
Property Information

Floor Plan - Unit 5-7: 17,317 sq. ft. Available



Convenient Location

2073 Logan Avenue is conveniently located just off Route 90, Winnipeg's busiest North-South traffic corridor. This creates great access to all other major routes across the city. Additionally, the property is close to the Winnipeg James Armstrong Richardson International Airport.



FOR LEASE

West Logan Place

2073 Logan Avenue, Winnipeg, Manitoba

CBRE

www.cbre.ca/winnipeg



For more information, please contact:

Cam Hildebrand

Associate Broker

Vice President

T +1 204 500 5008

cam.hildebrand@cbre.com

Daniel Mondor

Personal Real Estate Corporation

Vice President

T +1 204 500 5003

daniel.mondor@cbre.com

CBRE Limited | Real Estate Brokerage | 201 Portage Avenue | Suite 1650 | Winnipeg, MB R3B 3K6 | +1 204 500 5001 | www.cbre.ca

This disclaimer shall apply to CBRE Limited, and to all divisions of the Corporation ("CBRE"). The information set out herein (the "Information") has not been verified by CBRE, and CBRE does not represent, warrant or guarantee the accuracy, correctness and completeness of the Information. CBRE does not accept or assume any responsibility or liability, direct or consequential, for the Information or the recipient's reliance upon the Information. The recipient of the Information should take such steps as the recipient may deem necessary to verify the Information prior to placing any reliance upon the Information. The Information may change and any property described in the Information may be withdrawn from the market at any time without notice or obligation to the recipient from CBRE.