

FOR LEASE

CBRE

951-977 Powell Avenue

Winnipeg, Manitoba

Unit 965 | 5,878 sq. ft.



Property Information



In close proximity to the Polo Park retail node



Easy access to Route 90 and the Winnipeg International Airport



±1,000 sq. ft of built-out office

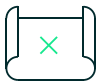


1 dock loading door

Asking Net Rent:	\$8.95 PSF
Additional Rent:	\$3.86 PSF (2024 est.) + 5% mgmt. fee on gross rent
Unit Size:	5,878 SF
Ceiling Height:	14' clear
Zoning:	M2 - Manufacturing General
Available:	May 1, 2024

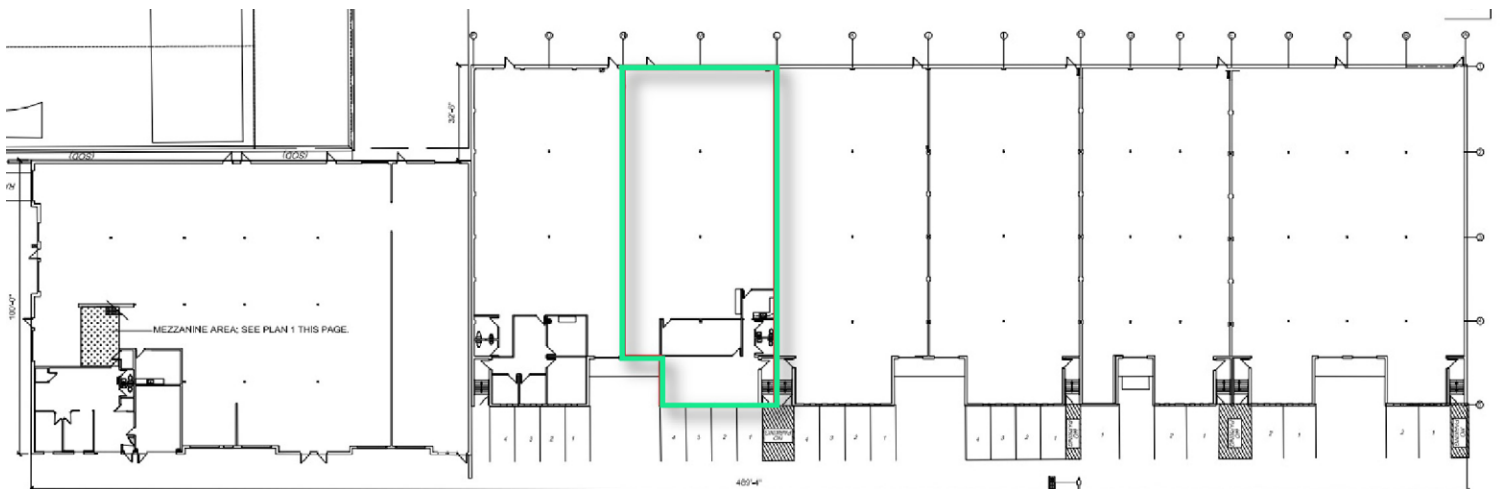
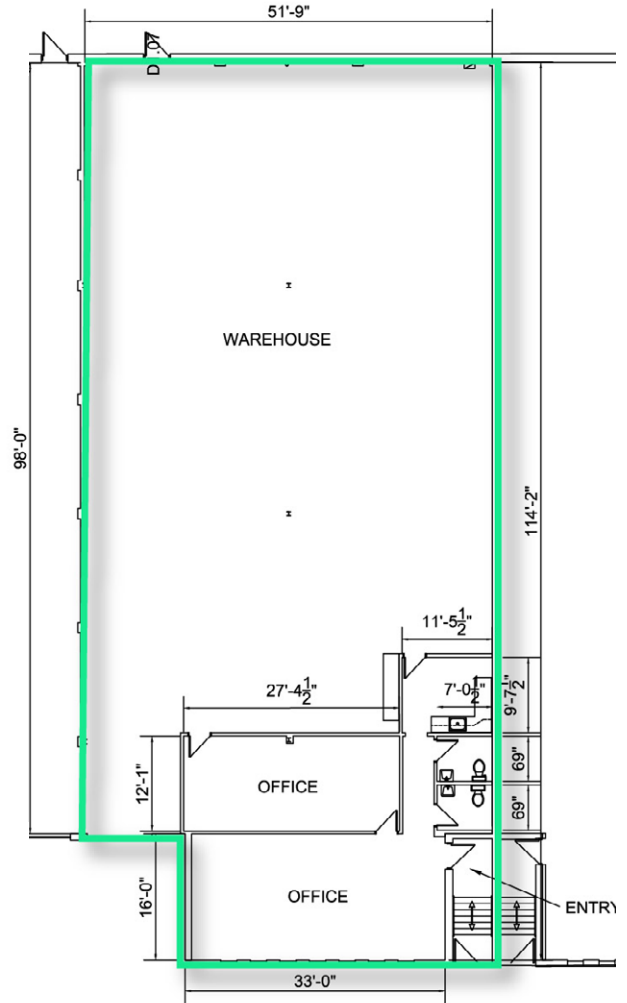


Site Plan



5,878 SF AVAILABLE

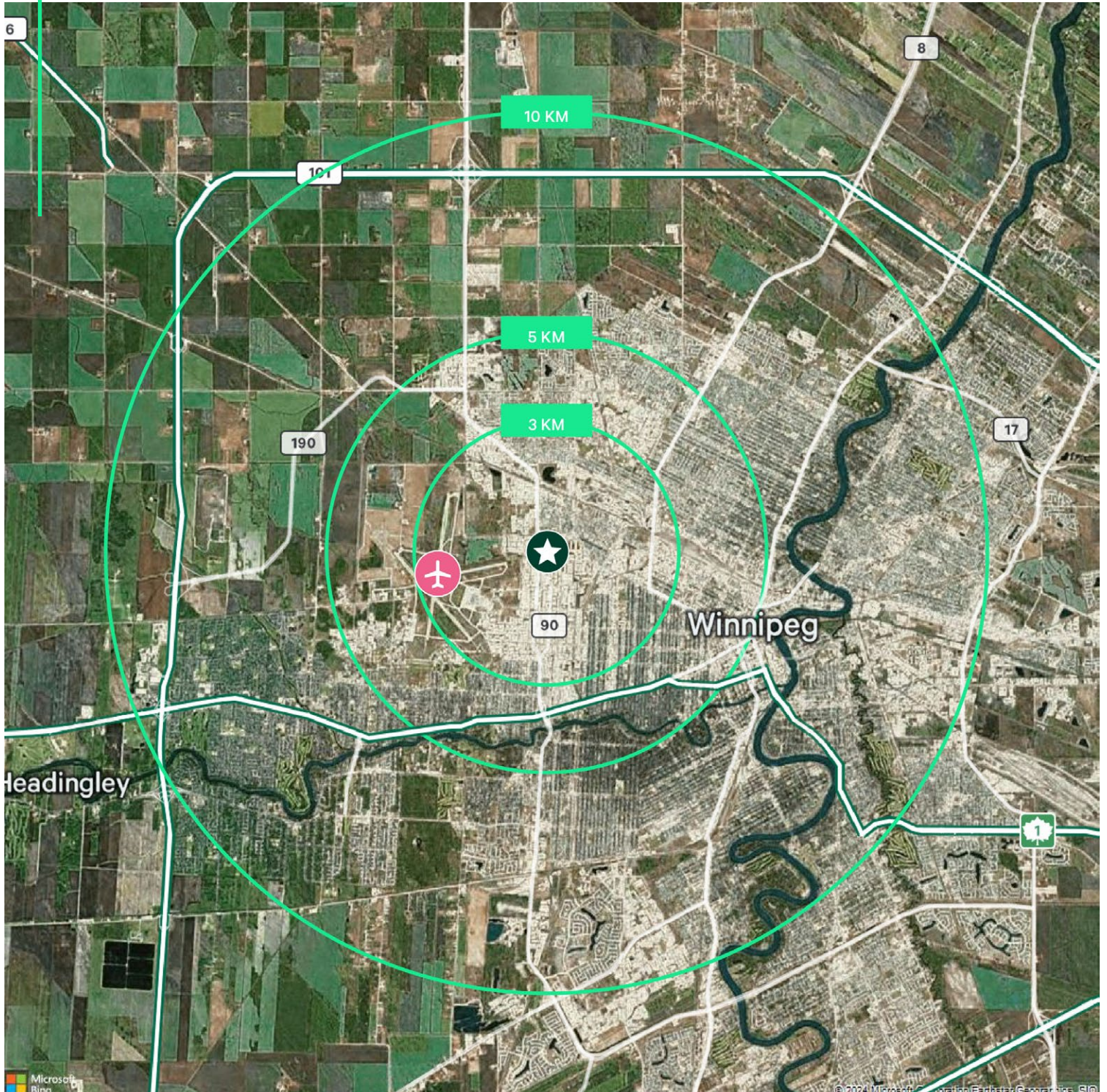
The unit at 951-977 Powell Avenue features built-out office, large open warehouse, and 1 dock loading door.



Location

★ 951-977 POWELL AVENUE

✈ YWG AIRPORT





951-977 Powell Avenue

Winnipeg, Manitoba

For more information, please contact:

Cam Hildebrand

Vice President
204 500 5008
cam.hildebrand@cbre.com

Paul Kornelsen

Vice President & Managing Director
204 500 5009
paul.kornelsen@cbre.com

CBRE

This disclaimer shall apply to CBRE Limited, and to all divisions of the Corporation ("CBRE"). The information set out herein (the "Information") has not been verified by CBRE, and CBRE does not represent, warrant or guarantee the accuracy, correctness and completeness of the Information. CBRE does not accept or assume any responsibility or liability, direct or consequential, for the Information or the recipient's reliance upon the Information. The recipient of the Information should take such steps as the recipient may deem necessary to verify the Information prior to placing any reliance upon the Information. The Information may change and any property described in the Information may be withdrawn from the market at any time without notice or obligation to the recipient from CBRE.