

West Logan Place

2073 Logan Avenue
Winnipeg, Manitoba R2R 0H9
www.cbre.ca

Warehouse space available in 2073 Logan Avenue



West Logan Place

2073 Logan Avenue | Winnipeg, Manitoba R2R 0H9



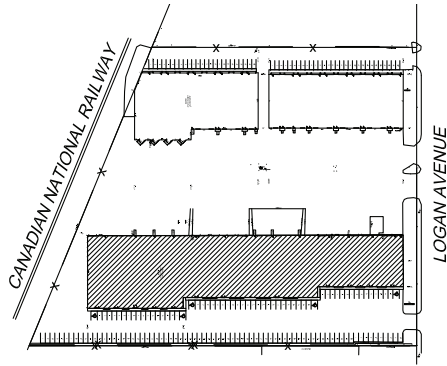
Unit 10-14

Asking Net Rent	\$9.95 PSF
Additional Rent	\$5.43 PSF plus 5% mgmt fee
Size	24,134 SF
Ceiling Height	24'
Loading	7 dock and 2 grade doors
Power	3 phase 200 amp
Zoning	M2
Available	April 2022

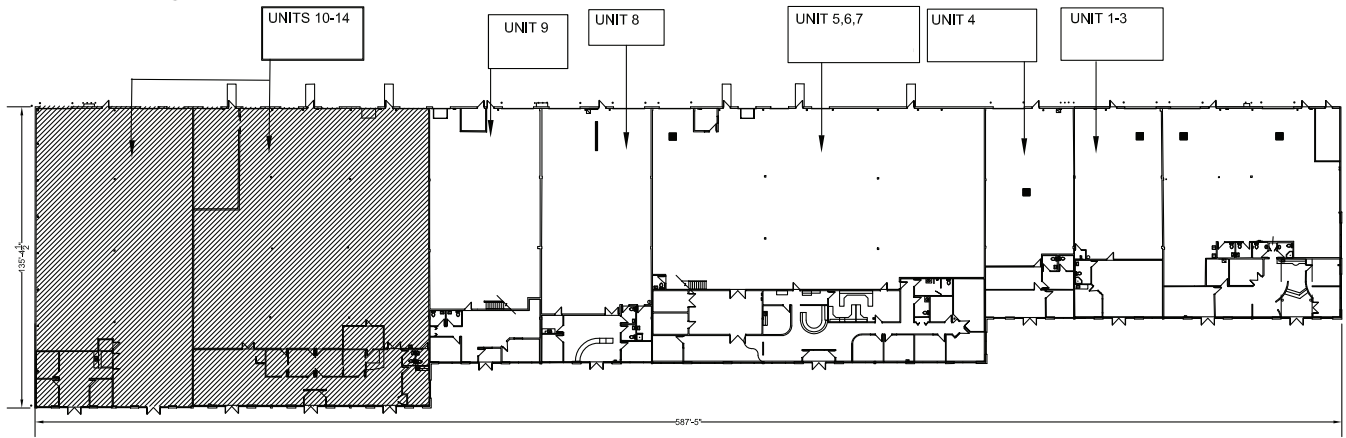
Highlights

- + Easy access to Route 90 and the Perimeter Highway
- + Proximal to the James Armstrong Richardson International Airport, major trucking routes and the city center
- + Large loading court with dock and grade loading
- + On-site parking
- + Fully sprinklered
- + Transit access
- + Large floor drain

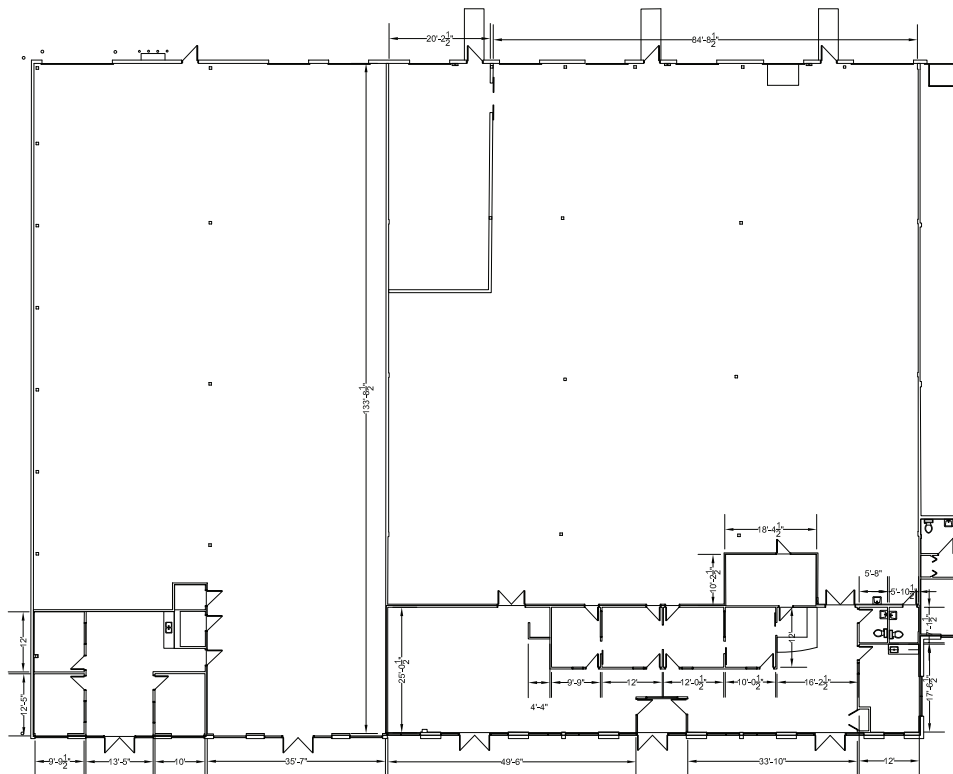
Site Plan



1 2073 LOGAN SITE PLAN
2 2 N.T.S.



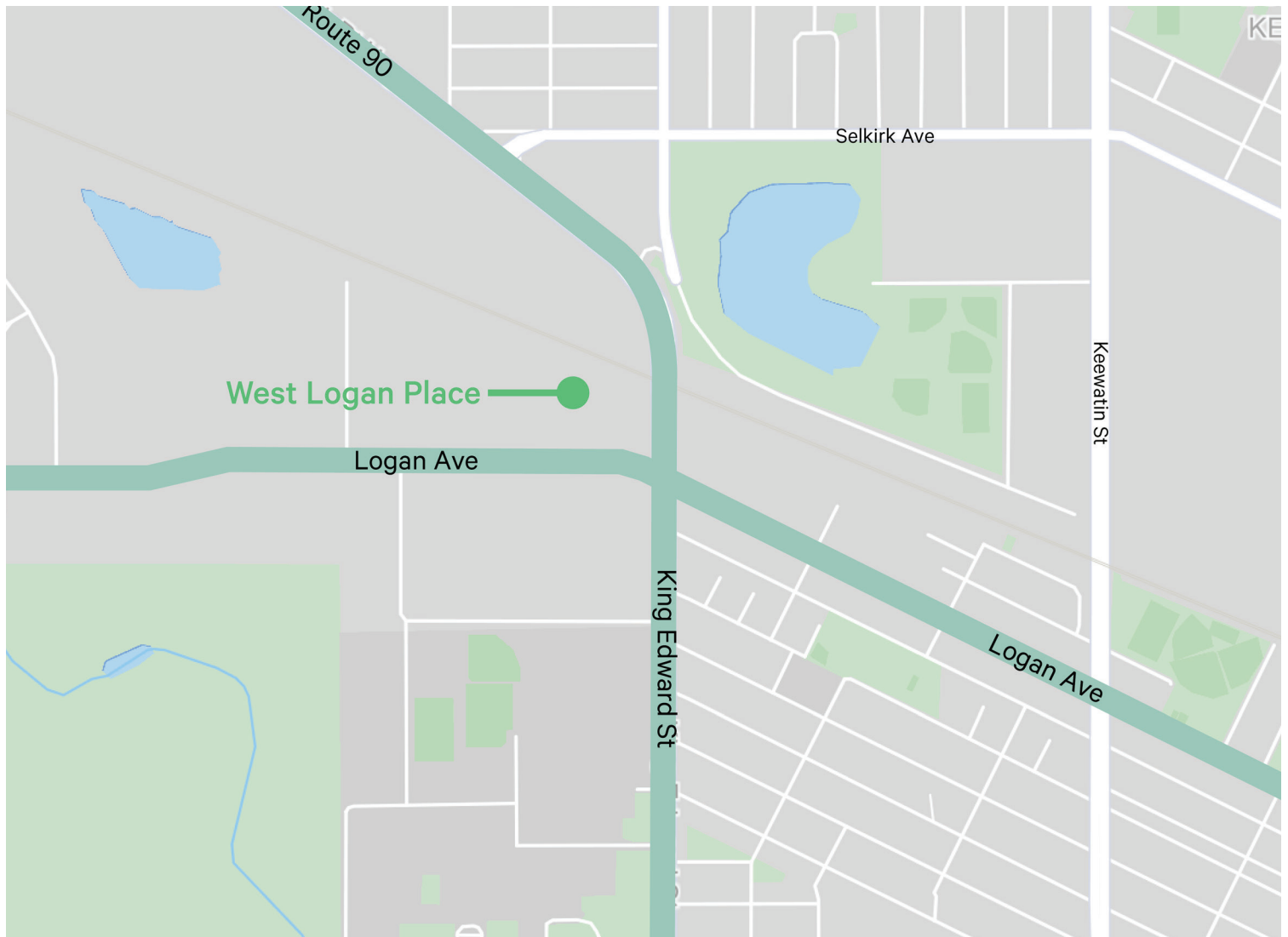
Floor Plan



West Logan Place

2073 Logan Avenue | Winnipeg, Manitoba R2R 0H9

For Lease



Contact Us

Cam Hildebrand

Vice President

204 500 5008

cam.hildebrand@cbre.com

This disclaimer shall apply to CBRE Limited, and to all divisions of the Corporation ("CBRE"). The information set out herein (the "Information") has not been verified by CBRE, and CBRE does not represent, warrant or guarantee the accuracy, correctness and completeness of the Information. CBRE does not accept or assume any responsibility or liability, direct or consequential, for the Information or the recipient's reliance upon the Information. The recipient of the Information should take such steps as the recipient may deem necessary to verify the Information prior to placing any reliance upon the Information. The Information may change and any property described in the Information may be withdrawn from the market at any time without notice or obligation to the recipient from CBRE.